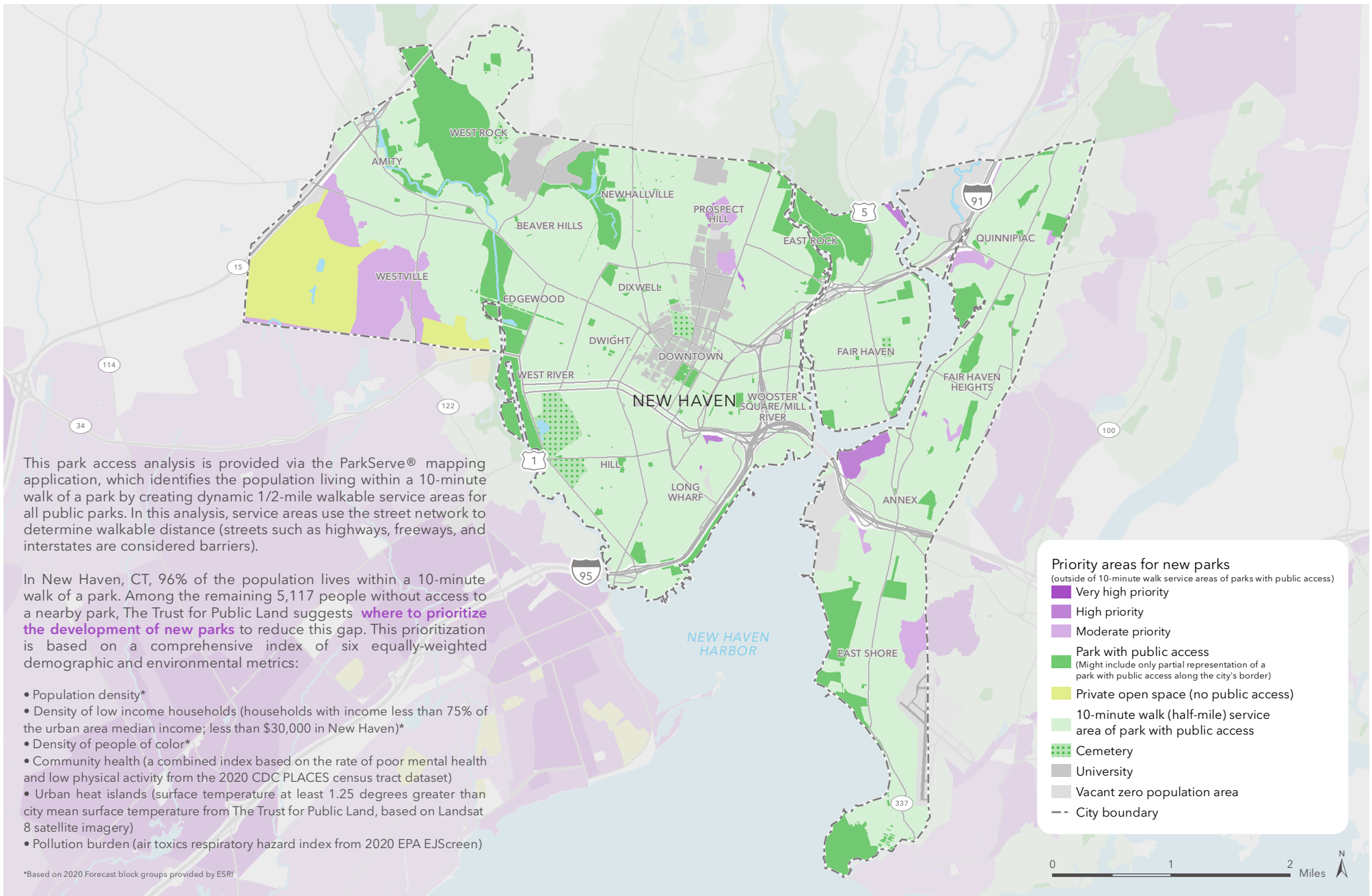


New Haven Custom ParkScore Maps

Park Access (Map 1) – This map highlights areas within the city that are further than a walkable half mile (“10 Minute Walk”) from a publicly accessible park.

Park Equity (Maps 2 – 4) – This set of maps highlights the differences in available park space per person between neighborhoods within New Haven. The first of these maps (‘Park space per person’) shows this range in the underlying orange heat map. The next map highlights 6 neighborhoods that both 1) are among the least park space per person *and* 2) are among the highest concentrations of either people of color or low-income households - Dixwell, Downtown, Dwight, Fair Haven, The Hill, and Newhallville.

The final map zooms out with two demographic overlays, one for the neighborhoods with the highest concentrations of people of color and white population and a second for the neighborhoods with the highest concentrations of low-income and high-income households. The comparison between these neighborhoods is the basis for part of the equity metrics used in the analysis.

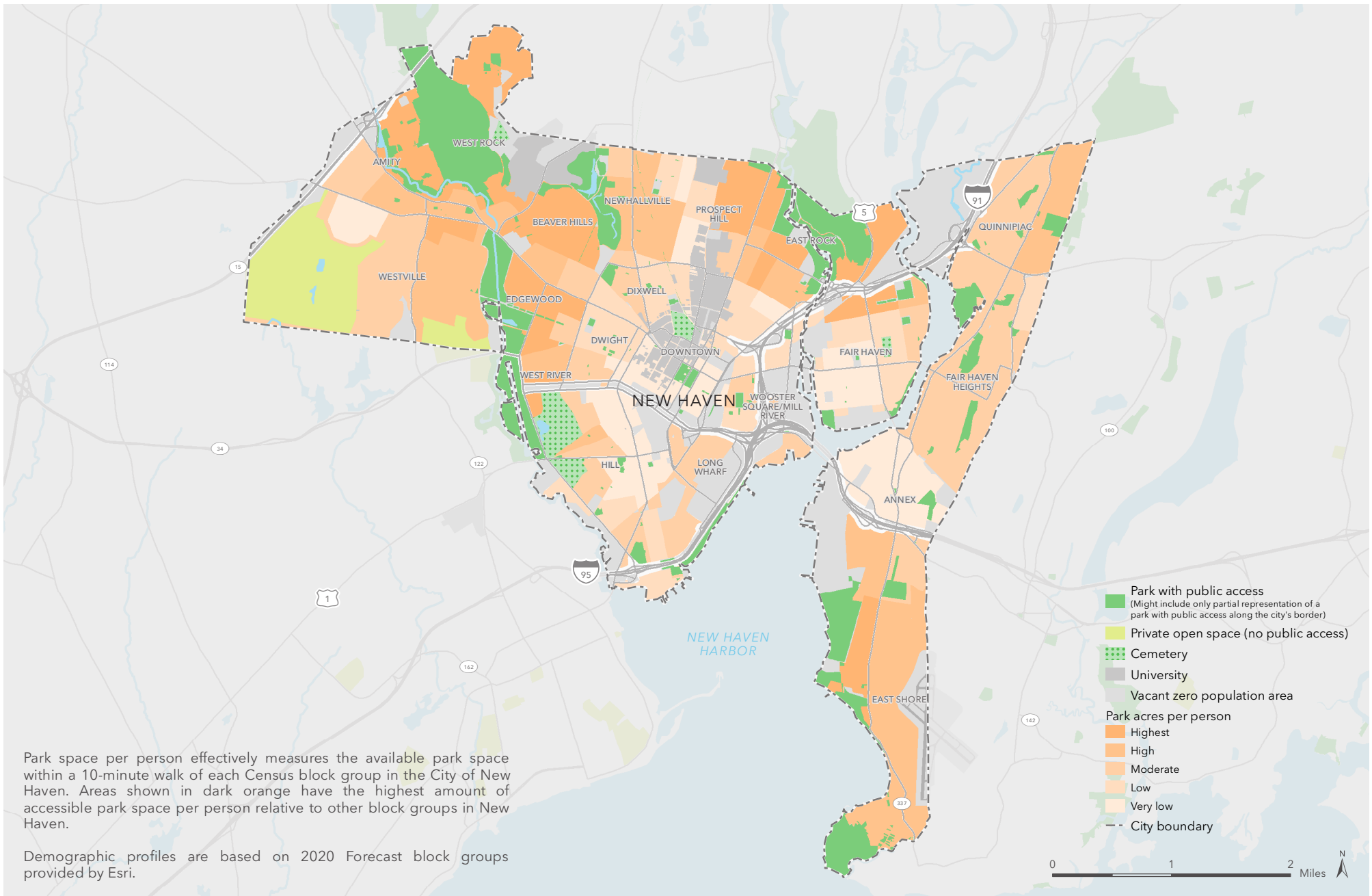


Park access

NEW HAVEN, CONNECTICUT

Special thanks to the City of New Haven, URI, Esri, and OSM. October 6, 2021. Copyright © The Trust for Public Land. The Trust for Public Land and The Trust for Public Land logo are federally registered marks of The Trust for Public Land. Information on this map is provided for purposes of discussion and visualization only. www.tpl.org

THE
TRUST
FOR
PUBLIC
LAND

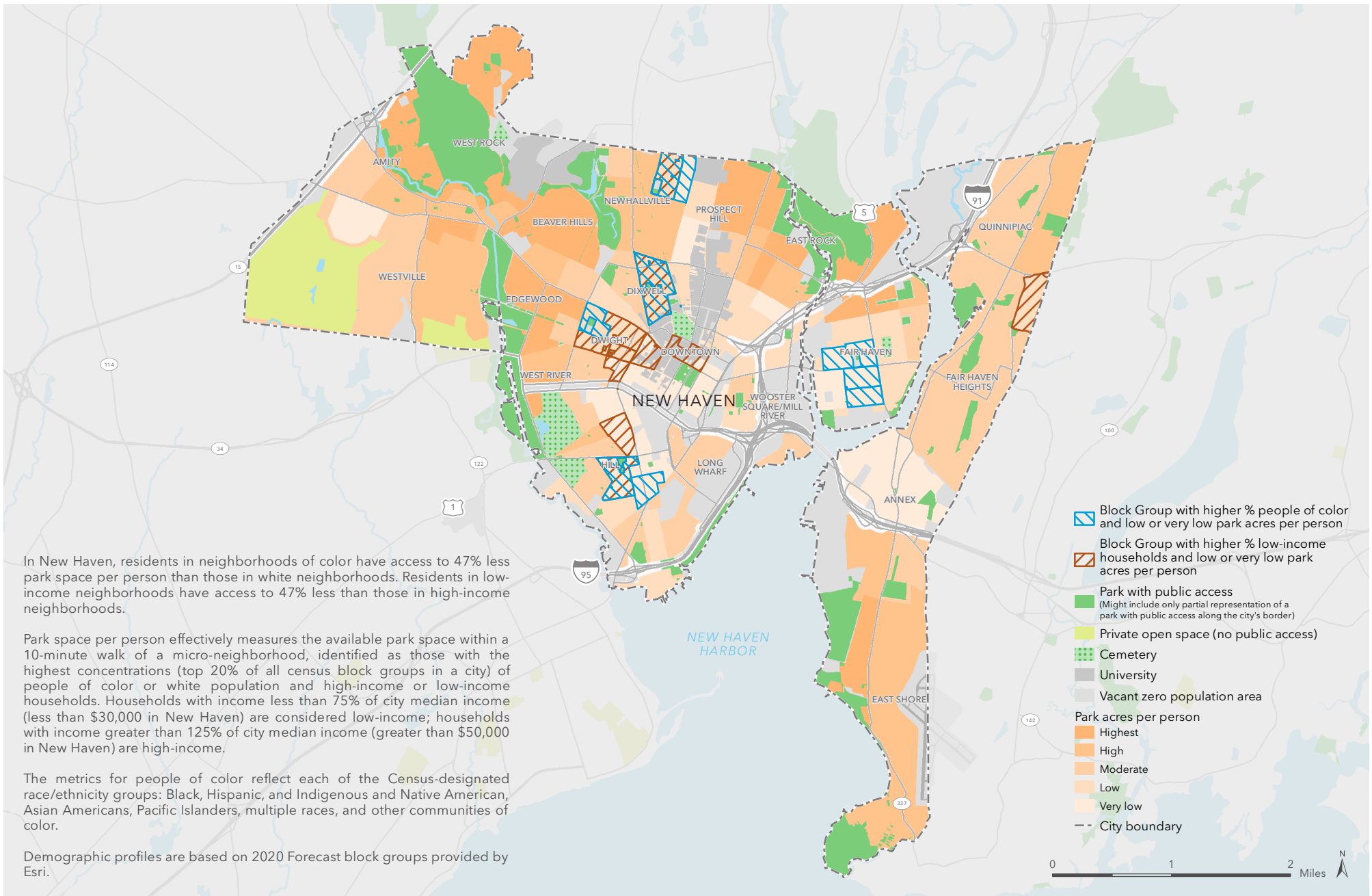


Park space per person

NEW HAVEN, CONNECTICUT

Special thanks to the City of New Haven, URI, Esri, and OSM. **October 15, 2021.** Copyright © The Trust for Public Land. The Trust for Public Land and The Trust for Public Land logo are federally registered marks of The Trust for Public Land. Information on this map is provided for purposes of discussion and visualization only. www.tpl.org



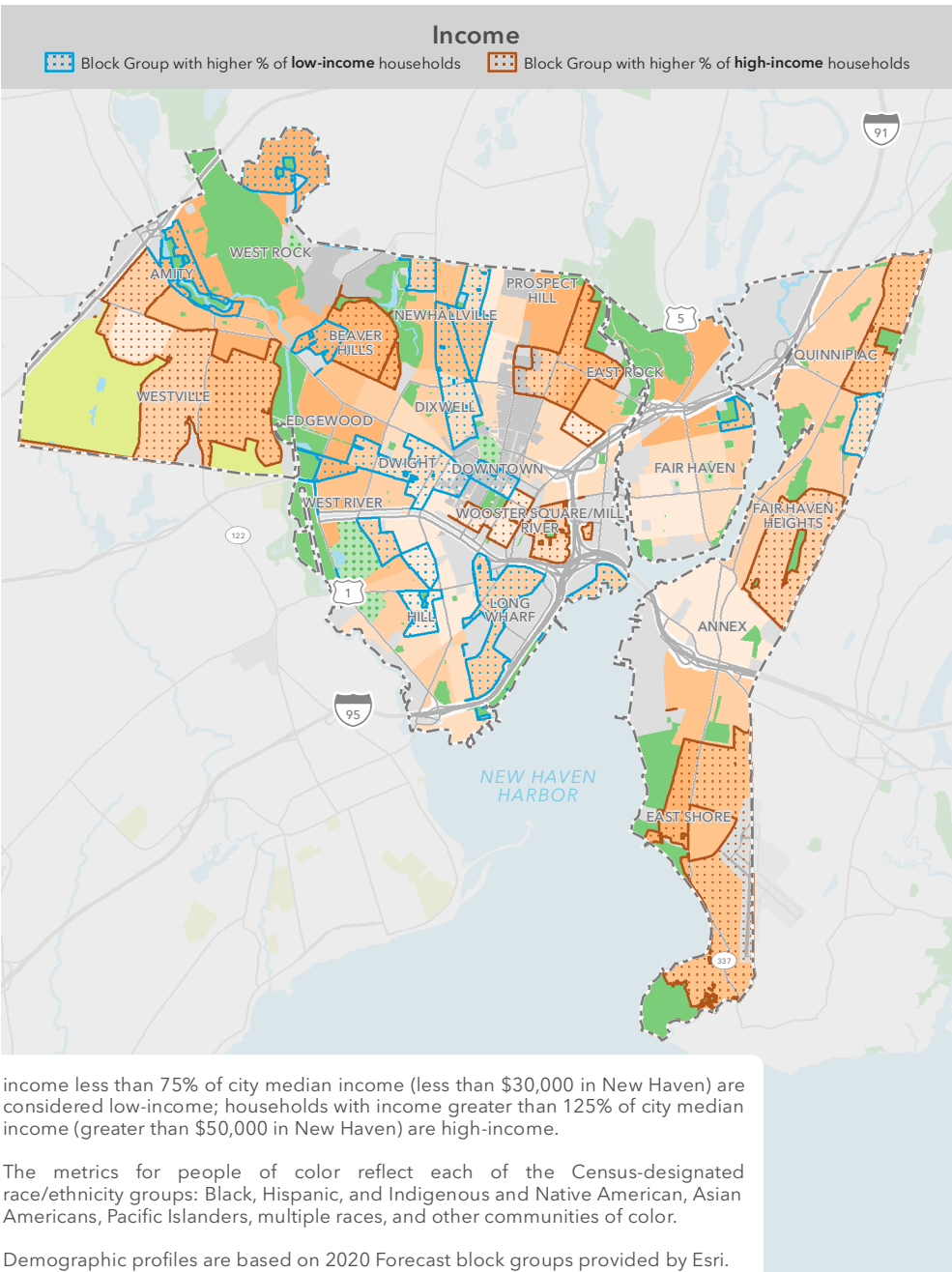
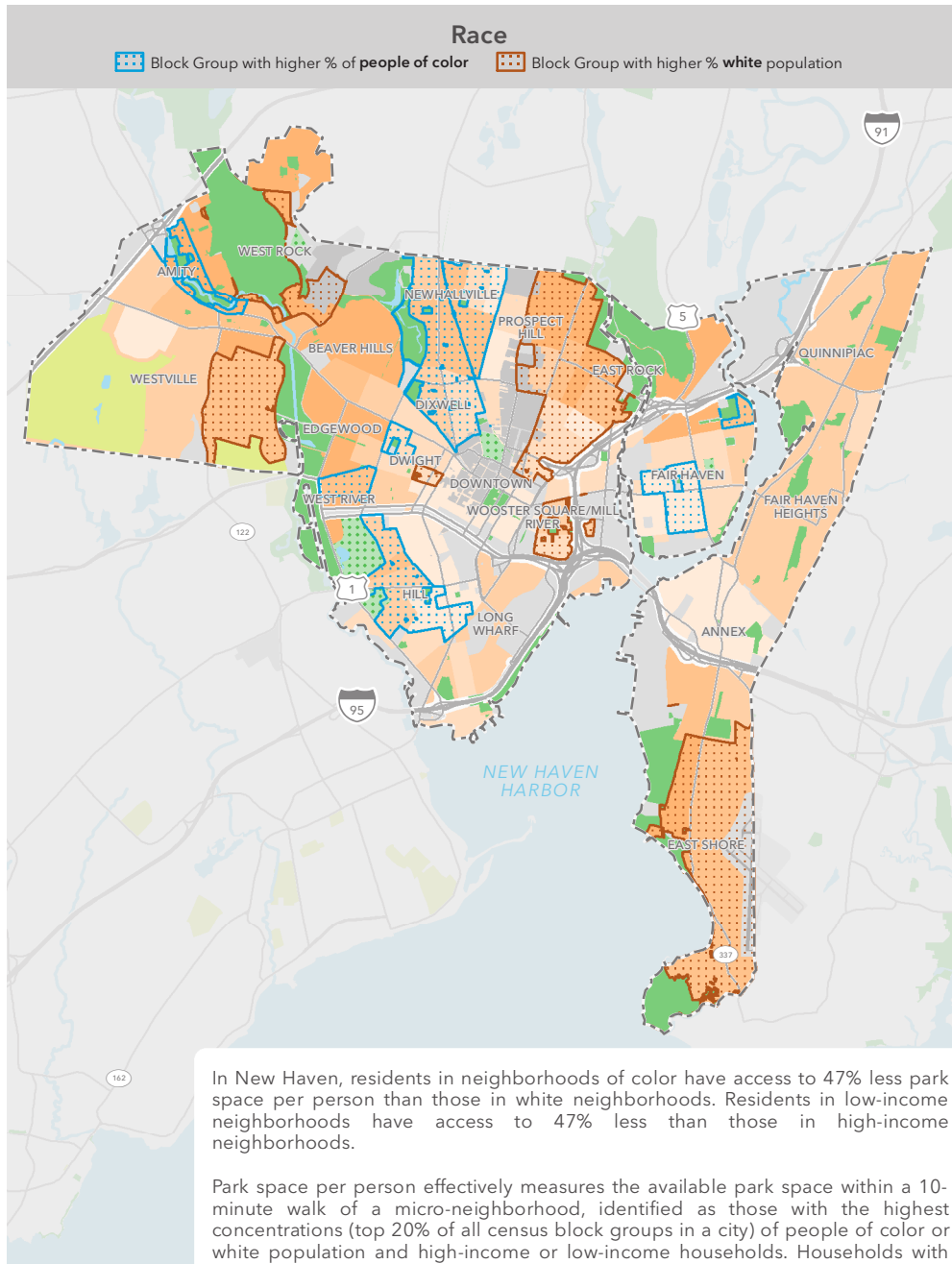


Park equity

NEW HAVEN, CONNECTICUT

Special thanks to the City of New Haven, URI, Esri, and OSM. **October 6, 2021.** Copyright © The Trust for Public Land. The Trust for Public Land and The Trust for Public Land logo are federally registered marks of The Trust for Public Land. Information on this map is provided for purposes of discussion and visualization only. www.tpl.org

THE
TRUST
FOR
PUBLIC
LAND



Park equity

NEW HAVEN, CONNECTICUT

Special thanks to the City of New Haven, URI, Esri, and OSM. **October 6, 2021.** Copyright © The Trust for Public Land. The Trust for Public Land and The Trust for Public Land logo are federally registered marks of The Trust for Public Land. Information on this map is provided for purposes of discussion and visualization only. www.tpl.org

